

Panel Filter Elements

For Compressor, Blower, and Turbine Intakes

- Interchange w/Orig. Equipment
- Rugged Construction
- Significant Savings
- Handling Straps
- Face Guards
- Long Life

These panels have proven their exceptional performance and value in replacing existing panel filters. Unlike HVAC filters, these high efficiency filters remove the very fine dust and dirt particles your eyes can't see, from 25 to 0.3 micron... protection required to serve engines, blowers, axial compressors, and turbines... with high efficiency, and low ΔP.

OEM Cat#	OEM Brand	Sparks™ Cat#	OEM Cat#	OEM Brand	Sparks™ Cat#	OEM Cat#	OEM Brand	Sparks™ Cat#
11293	IFM	329-9928	45005	Snshn	329-9927	CP4364	IFM	329-9927
12005	IFM	329-9929	45006	Snshn	329-9925	P0540009-189	Joy	329-9928
12099	IFM	329-9929	45007	Snshn	329-9926	P0540009-190	Joy	329-9927
12164	IFM	329-9927	45008	Snshn	329-9927	P0540009-361	Joy	329-9926
12166	IFM	329-9925	45010	Snshn	329-9925	P0540009-362	Joy	329-9925
15752	Cnslr/Graver	329-9925	45022	Snshn	329-9876K5	P0540009-491	Joy	329-9929
15753	Cnslr/Graver	329-9926	78176	IFM	329-9926	P151	IFM	329-9876
15754	Cnslr/Graver	329-9927	1X2876	IR	329-9928	P20252-90	IFM	329-9876K90
15755	Cnslr/Graver	329-9928	1X2877	IR	329-9927	PF2102100	Nafco	329-9929
15800	Cnslr/Graver	329-9929	1X5573	IR	329-9928	PF2201100	Nafco	329-9928
15860	Cnslr/Graver	329-9929	1X5575	IR	329-9926	PF2212020	Nafco	329-9927
15937	Cnslr/Graver	329-9928	1X5577	IR	329-9929	PF2302040	Nafco	329-9929
16100	Cnslr/Graver	329-9925	1X6410	IR	329-9929	PF2306020	Nafco	329-9926
16101	Cnslr/Graver	329-9926	1X7169	IR	329-9925	PF2312003	Nafco	329-9925
16102	Cnslr/Graver	329-9927	1X8258	IR	329-9928	VE-1103-2424-093	Dlngr	329-9928
18008	Cnslr/Graver	329-9929	1X8259	IR	329-9875	VE-1113-2424-005	Dlngr	329-9929
20523	Cnslr/Graver	329-9929	1X8260	IR	329-9929	VE-1113-2424-099	Dlngr	329-9929
45001	Snshn	329-9928	1X9589	IR	329-9929	VE-1304-2424-176	Dlngr	329-9926
45002	Snshn	329-9928	81-0165	Univ	329-9876K200	VE-1305-2424-164	Dlngr	329-9927
45003	Snshn	329-9929	81-0173	Univ	329-9876K5	VE-1305-2424-166	Dlngr	329-9925
45004	Snshn	329-9928	CP4093	IFM	329-9928	VE-1315-2424-178	Dlngr	329-9927
45005	Snshn	329-9875	CP4166	IFM	329-9925	VE-3305-2424-164	Dlngr	329-9927
45009	Snshn	329-9929	CP4276	IFM	329-9926	VE-3305-2424-166	Dlngr	329-9925
						XL-90	AmrAir	329-9927

See <http://www.sparksfilters.com> for more options.



Cat No. 329-9875

- 2nd / Final Stage
- Side Engagement Holes
- 24 x 24 x 12 nominal
- 23.4 x 23.4 x 12 actual
- Galvanized Frame
- 1/4" Gaskets Ea. Face
- Microglass Media
- 2500 CFM Nom. Cap.
- 2µ Retention
- 0.9" W.C. initial.



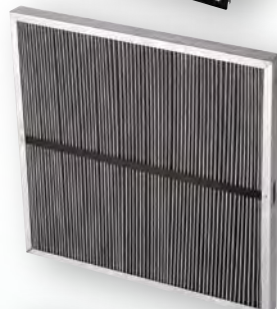
Cat No. 329-9927

- 2nd / Final Stage
- 24 x 24 x 12 nominal
- 23.4 x 23.4 x 12 actual
- Galvanized Frame
- 1/4" Gaskets Ea. Face
- Microglass Media
- 2500 CFM Nom. Cap.
- 2µ Retention
- 0.9" W.C. initial



Cat No. 329-9876

- 1st Stage
- 20 x 25 x 2 nominal
- 19.5 x 24.5 x 1.875 actual
- Galvanized Frame
- Optional Media's
 - #5 Polyester (add K5)
 - #200 Wire Mesh (add K200)
- 2000 CFM Nom. Cap.
- 10-750µ Retention
- 0.9" W.C. initial.



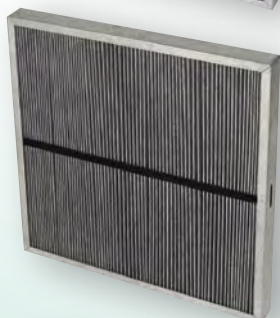
Cat No. 329-9928

- 1st Stage
- 24 x 24 x 1.5 nominal
- 23.5 x 23.5 x 1.5 actual
- Galvanized Frame
- Polyester Media
- Washable / Reusable
- 2500 CFM Nom. Cap.
- 10-25µ Retention
- 0.6" W.C. initial



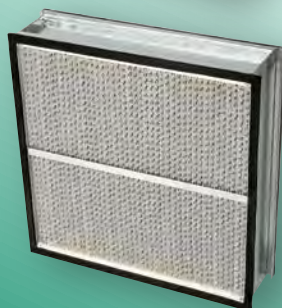
Cat No. 329-9925

- 3rd / Final Stage
- 24 x 24 x 12 nominal
- 23.4 x 23.4 x 12 actual
- Galvanized Frame
- 1/4" Gaskets Ea. Face
- Microglass Media
- 1250 CFM Nom. Cap.
- 0.3µ Retention
- 1" W.C. initial



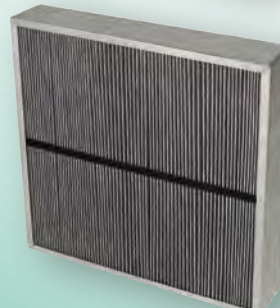
Cat No. 329-9929

- 1st or Single Stage
- 24 x 24 x 2 nominal
- 23.5 x 23.5 x 2 actual
- Galvanized Frame
- Polyester Media
- Washable / Reusable
- 2500 CFM Nom. Cap.
- 4-10µ Retention
- 1.1" W.C. initial



Cat No. 329-9926

- 2nd Stage
- 24 x 24 x 6 nominal
- 23.4 x 23.4 x 6.25 actual
- Galvanized Frame
- 1/4" Gaskets Ea. Face
- Microglass Media
- 1250 CFM Nom. Cap.
- 5µ Retention
- 0.5" W.C. initial



Cat No. 329-9784

- 1st or Single Stage
- 24 x 24 x 4 nominal
- 23.5 x 23.5 x 3.625 actual
- Galvanized Frame
- Various Medias
- 3000 CFM Nom. Cap.
- 10µ Retention
- 1" W.C. initial