

One Stage Panel Filters

Series S10 - Enameled Steel • Series S12 - 304 Stainless Steel



For more information contact :

SparksFilters 585-624-4500

585-624-5300 fax

E-Mail: Sales@sparksfilters.com

• Exceptional Construction.

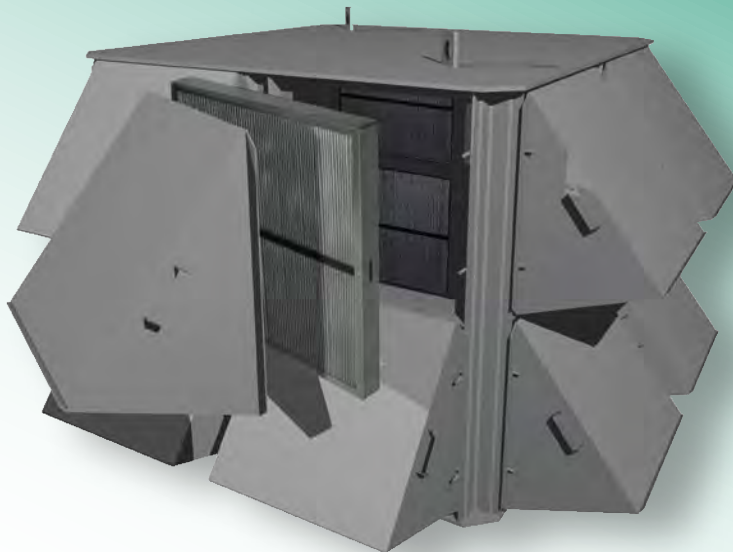
All seams are seal welded, not caulked or spot welded. Our filter panels are held in place with 3/8" wing nuts, not metal clips. We offer the highest quality workmanship backed by our unequalled turn around time. Our team also offers housings in 304 Stainless Steel & other materials with all seams seal welded against leakage. A safety cage guarding the outlet is standard. Silencer materials are also added.

• 329-9929 Panel Element

This filter panel incorporates pleated polyester filter media @ 10µ retention. Panels can be cleaned by using indirect compressed air or mild detergent cleaning solution. Woven wire screen armors both faces of the synthetic filter media. A pull strap across the face of the panel ensures ease in maintenance. The frame is one piece electrogalvanized steel. Downstream expanded metal or woven wire face screen.

• Options include:

Support legs, weather hoods, hinged weather hoods, gauges, ΔP Taps, spring latches, rupture disk panels, and louvers. Top or side outlet is also available.

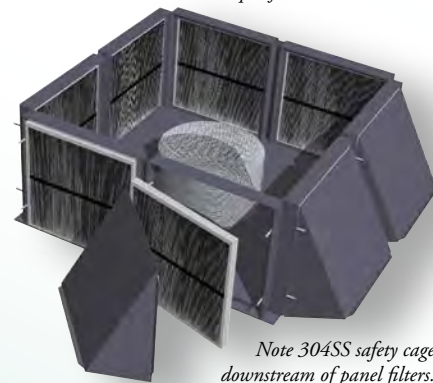


Panel Filters should be used in non-pulsating flows. Consult us for before considering use w/reciprocating compressors.

Enameled Steel Housing Cat No.	304SS Housing Cat. No.	Typ. Flow CFM	Max Flg	Panel Openings	W Max*	L Max*	H Max*	C Ref*	Wgt Lbs.	Panel Elem. No.
S10-0050-FF-120	S12-0050-FF-120	2,500	12"	1	25"	24"	26½"	6"	150	329-9929
S10-0051-FF-200	S12-0051-FF-200	5,000	20"	2	32"	25"	26½"	6"	250	329-9929
S10-0052-FF-200	S12-0052-FF-200	7,500	20"	3	32"	28"	26½"	6"	290	329-9929
S10-0053-FF-200	S12-0053-FF-200	10,000	20"	4	32"	32"	26½"	6"	390	329-9929
S10-0054-FF-360	S12-0054-FF-360	15,000	36"	6	60"	58"	26½"	8"	750	329-9929
S10-0055-FF-360	S12-0055-FF-360	20,000	36"	8	60"	60"	26½"	8"	800	329-9929
S10-0056-FF-360	S12-0056-FF-360	25,000	36"	10	60"	58"	54"	8"	1000	329-9929
S10-0057-FF-360	S12-0057-FF-360	30,000	36"	12	60"	60"	54"	8"	1150	329-9929
S10-0058-FF-360	S12-0058-FF-360	35,000	36"	14	60"	60"	54"	8"	1250	329-9929
S10-0059-FF-360	S12-0059-FF-360	40,000	36"	16	60"	60"	54"	8"	1350	329-9929
S10-0060-FF-360	S12-0060-FF-360	45,000	36"	18	60"	58"	78"	8"	1500	329-9929
S10-0061-FF-360	S12-0061-FF-360	50,000	36"	20	60"	60"	78"	8"	1650	329-9929
S10-0062-FF-360	S12-0062-FF-360	60,000	36"	24	60"	60"	78"	8"	1800	329-9929

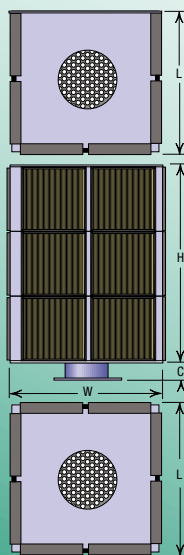


Four Panel S12 304SS filter unit designed to meet specific installation needs.



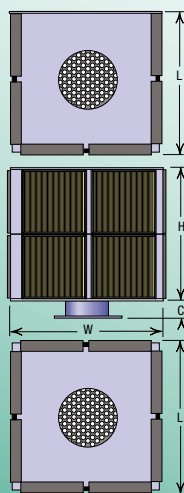
Note 304SS safety cage downstream of panel filters. Helps prevent leaves, pens, bats, and other debris from traveling into the compressor, blower, or turbine intake at filter change out!

S10-0060-FF-360



S10-0057-FF-360

S10-0056-FF-360 w/ 2 blanks

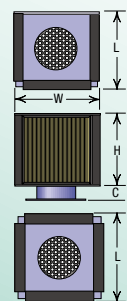


(1) Dimensions are approx., Refer to approval drawings for actual dimensions & tolerances.

(2) Optional Weather Hoods add 11" to L and/or W i.e. hoods on two sides add 22".

See <http://www.sparksfilters.com> for more options.

S10-0052-FF-200



S10-0062-FF-360

S10-0061-FF-360 w/ 4 blanks

S10-0059-FF-360

S10-0058-FF-360 w/ 2 blanks

S10-0055-FF-360

S10-0054-FF-360

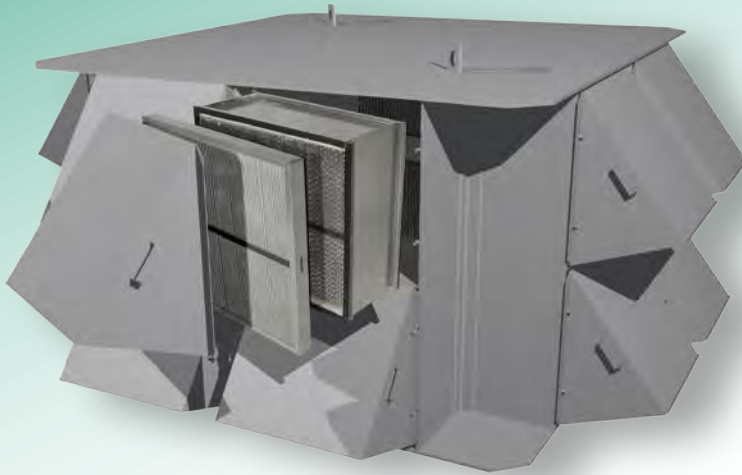
S10-0053-FF-200

S10-0051-FF-200

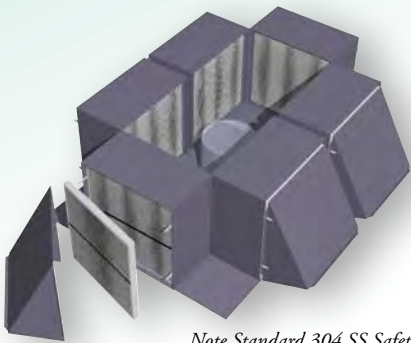
S10-0050-FF-120

Two Stage Panel Filters

Series S20 - Enameled Steel • Series S22 - 304 Stainless Steel



Panel Filters should be used in non-pulsating flows. Consult us for before considering use w/reciprocating compressors.



Note Standard 304 SS Safety Cage Located over discharge Connection.

• Exceptional Construction.

All seams are seal welded, not caulked or spot welded. Our filter panels are held in place with 3/8" wing nuts, not metal clips. We offer the highest quality workmanship backed by our unequaled turn around time. Our team also offers housings in 304 Stainless Steel & other materials with all seams seal welded against leakage. A safety cage guarding the outlet is standard. Silencer materials are also added.

• 329-9928 1st Stage Element

This filter panel incorporates pleated polyester filter media @ 10-25µ retention. Panels can be cleaned by using indirect compressed air or mild detergent cleaning solution. Woven wire screen armors both faces of the synthetic filter media. A pull strap across the face of the panel ensures ease in maintenance. The frame is one piece electrogalvanized steel. Downstream expanded metal or woven wire face screen.

• 329-9927 2nd Stage

This filter panel incorporates pleated microglass filter media with gaskets on each face. It's filter media offers 99.97% efficiency @ 2µ retention with aluminum fin spacers and a galvanized frame construction.

• Options include:

Support legs, weather hoods, hinged weather hoods, gauges, ΔP Taps, spring latches, rupture disk panels, and louvers. Top or side outlet is also available.

Enameled Steel Housing Cat No.	304SS Housing Cat. No.	Typ. Flow CFM	Max Flg	Panel Open-ings	W Max*	L Max*	H Max*	C Ref*	Wgt Lbs.	1st Stage Elem. No.	2nd Stage Elem. No.
S20-0001-FF-120	S22-0001-FF-120	2,500	12"	1	25"	40"	26½"	6"	150	329-9928	329-9927
S20-0002-FF-200	S22-0002-FF-200	5,000	20"	2	40"	32"	26½"	6"	300	329-9928	329-9927
S20-0003-FF-200	S22-0003-FF-200	7,500	20"	3	40"	72"	26½"	6"	400	329-9928	329-9927
S20-0004-FF-200	S22-0004-FF-200	10,000	20"	4	40"	46"	26½"	6"	450	329-9928	329-9927
S20-0006-FF-360	S22-0006-FF-360	15,000	36"	6	92"	60"	26½"	8"	650	329-9928	329-9927
S20-0008-FF-360	S22-0008-FF-360	20,000	36"	8	92"	92"	26½"	8"	1100	329-9928	329-9927
S20-0010-FF-360	S22-0010-FF-360	25,000	36"	10	92"	80"	54"	8"	1400	329-9928	329-9927
S20-0012-FF-360	S22-0012-FF-360	30,000	36"	12	92"	80"	54"	8"	1550	329-9928	329-9927
S20-0014-FF-360	S22-0014-FF-360	35,000	36"	14	92"	92"	54"	8"	1700	329-9928	329-9927
S20-0016-FF-360	S22-0016-FF-360	40,000	36"	16	92"	92"	54"	8"	1800	329-9928	329-9927
S20-0018-FF-360	S22-0018-FF-360	45,000	36"	18	92"	80"	78"	8"	2100	329-9928	329-9927
S20-0020-FF-360	S22-0020-FF-360	50,000	36"	20	92"	92"	78"	8"	2300	329-9928	329-9927
S20-0024-FF-360	S22-0024-FF-360	60,000	36"	24	92"	92"	78"	8"	2500	329-9928	329-9927

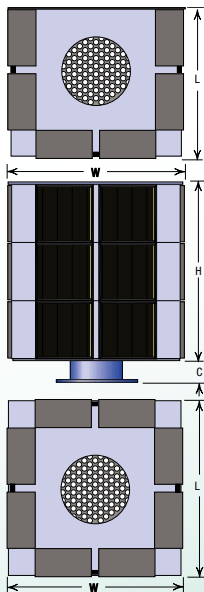
(1) Dimensions are approx., Refer to approval drawings for actual dimensions & tolerances.

(2) Optional Weather Hoods add 11" to L and/or W i.e. hoods on two sides add 22".

See <http://www.sparksfilters.com> for more options.

S22 Series stainless steel housing w/optional weather hoods

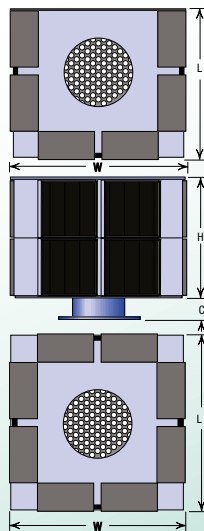
S20-0018-FF-360



S20-0024-FF-360
S20-0020-FF-360
w/4 blanks

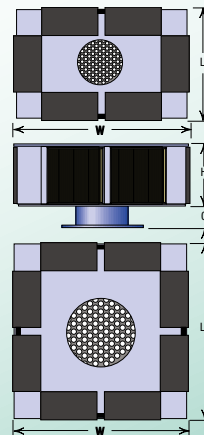
S20-0012-FF-360

S20-0010-FF-360
w/ 2 blanks



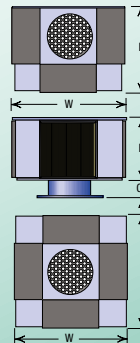
S20-0016-FF-360
S20-0014-FF-360
w/2 blanks

S20-0006-FF-360

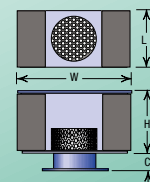


S20-0008-FF-360

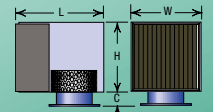
S20-0003-FF-200



S20-0004-FF-200



S20-0002-FF-200



S20-0001-FF-120

Panel Filter Elements

For Compressor, Blower, and Turbine Intakes

- Interchange w/Orig. Equipment
- Rugged Construction
- Significant Savings
- Handling Straps
- Face Guards
- Long Life

These panels have proven their exceptional performance and value in replacing existing panel filters. Unlike HVAC filters, these high efficiency filters remove the very fine dust and dirt particles your eyes can't see, from 25 to 0.3 micron... protection required to serve engines, blowers, axial compressors, and turbines... with high efficiency, and low ΔP.

OEM Cat#	OEM Brand	Sparks™ Cat#	OEM Cat#	OEM Brand	Sparks™ Cat#	OEM Cat#	OEM Brand	Sparks™ Cat#
11293	IFM	329-9928	45005	Snshn	329-9927	CP4364	IFM	329-9927
12005	IFM	329-9929	45006	Snshn	329-9925	P0540009-189	Joy	329-9928
12099	IFM	329-9929	45007	Snshn	329-9926	P0540009-190	Joy	329-9927
12164	IFM	329-9927	45008	Snshn	329-9927	P0540009-361	Joy	329-9926
12166	IFM	329-9925	45010	Snshn	329-9925	P0540009-362	Joy	329-9925
15752	Cnslr/Graver	329-9925	45022	Snshn	329-9876K5	P0540009-491	Joy	329-9929
15753	Cnslr/Graver	329-9926	78176	IFM	329-9926	P151	IFM	329-9876
15754	Cnslr/Graver	329-9927	1X2876	IR	329-9928	P20252-90	IFM	329-9876K90
15755	Cnslr/Graver	329-9928	1X2877	IR	329-9927	PF2102100	Nafco	329-9929
15800	Cnslr/Graver	329-9929	1X5573	IR	329-9928	PF2201100	Nafco	329-9928
15860	Cnslr/Graver	329-9929	1X5575	IR	329-9926	PF2212020	Nafco	329-9927
15937	Cnslr/Graver	329-9928	1X5577	IR	329-9929	PF2302040	Nafco	329-9929
16100	Cnslr/Graver	329-9925	1X6410	IR	329-9929	PF2306020	Nafco	329-9926
16101	Cnslr/Graver	329-9926	1X7169	IR	329-9925	PF2312003	Nafco	329-9925
16102	Cnslr/Graver	329-9927	1X8258	IR	329-9928	VE-1103-2424-093	Dlngr	329-9928
18008	Cnslr/Graver	329-9929	1X8259	IR	329-9875	VE-1113-2424-005	Dlngr	329-9929
20523	Cnslr/Graver	329-9929	1X8260	IR	329-9929	VE-1113-2424-099	Dlngr	329-9929
45001	Snshn	329-9928	1X9589	IR	329-9929	VE-1304-2424-176	Dlngr	329-9926
45002	Snshn	329-9928	81-0165	Univ	329-9876K200	VE-1305-2424-164	Dlngr	329-9927
45003	Snshn	329-9929	81-0173	Univ	329-9876K5	VE-1305-2424-166	Dlngr	329-9925
45004	Snshn	329-9929	CP4093	IFM	329-9928	VE-1315-2424-178	Dlngr	329-9927
45005	Snshn	329-9875	CP4166	IFM	329-9925	VE-3305-2424-164	Dlngr	329-9927
45009	Snshn	329-9929	CP4276	IFM	329-9926	VE-3305-2424-166	Dlngr	329-9925
						XL-90	AmrAir	329-9927

See <http://www.sparksfilters.com> for more options.



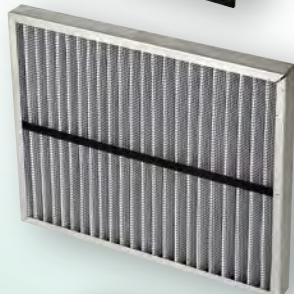
Cat No. 329-9875

- 2nd / Final Stage
- Side Engagement Holes
- 24 x 24 x 12 nominal
- 23.4 x 23.4 x 12 actual
- Galvanized Frame
- 1/4" Gaskets Ea. Face
- Microglass Media
- 2500 CFM Nom. Cap.
- 2µ Retention
- 0.9" W.C. initial.



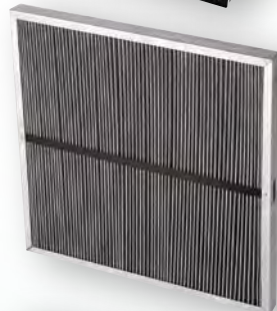
Cat No. 329-9927

- 2nd / Final Stage
- 24 x 24 x 12 nominal
- 23.4 x 23.4 x 12 actual
- Galvanized Frame
- 1/4" Gaskets Ea. Face
- Microglass Media
- 2500 CFM Nom. Cap.
- 2µ Retention
- 0.9" W.C. initial



Cat No. 329-9876

- 1st Stage
- 20 x 25 x 2 nominal
- 19.5 x 24.5 x 1.875 actual
- Galvanized Frame
- Optional Media's
 - #5 Polyester (add K5)
 - #200 Wire Mesh (add K200)
- 2000 CFM Nom. Cap.
- 10-750µ Retention
- 0.9" W.C. initial.



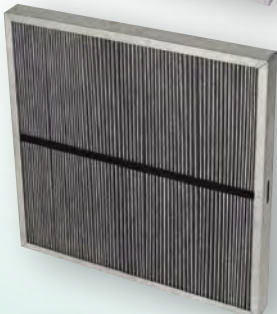
Cat No. 329-9928

- 1st Stage
- 24 x 24 x 1.5 nominal
- 23.5 x 23.5 x 1.5 actual
- Galvanized Frame
- Polyester Media
- Washable / Reusable
- 2500 CFM Nom. Cap.
- 10-25µ Retention
- 0.6" W.C. initial



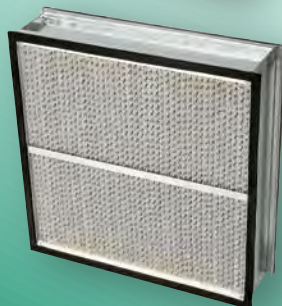
Cat No. 329-9925

- 3rd / Final Stage
- 24 x 24 x 12 nominal
- 23.4 x 23.4 x 12 actual
- Galvanized Frame
- 1/4" Gaskets Ea. Face
- Microglass Media
- 1250 CFM Nom. Cap.
- 0.3µ Retention
- 1" W.C. initial



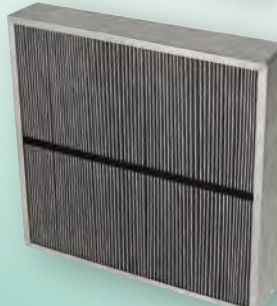
Cat No. 329-9929

- 1st or Single Stage
- 24 x 24 x 2 nominal
- 23.5 x 23.5 x 2 actual
- Galvanized Frame
- Polyester Media
- Washable / Reusable
- 2500 CFM Nom. Cap.
- 4-10µ Retention
- 1.1" W.C. initial



Cat No. 329-9926

- 2nd Stage
- 24 x 24 x 6 nominal
- 23.4 x 23.4 x 6.25 actual
- Galvanized Frame
- 1/4" Gaskets Ea. Face
- Microglass Media
- 1250 CFM Nom. Cap.
- 5µ Retention
- 0.5" W.C. initial



Cat No. 329-9784

- 1st or Single Stage
- 24 x 24 x 4 nominal
- 23.5 x 23.5 x 3.625 actual
- Galvanized Frame
- Various Medias
- 3000 CFM Nom. Cap.
- 10µ Retention
- 1" W.C. initial