

# Two Stage Economy Panel Filters

**98% @ 15µ / 2µ Final Stage Filtration**

Series S20 - Enameled Steel • Series S22 - 304 Stainless Steel



Panel Filters should be used in non-pulsating flows. Consult us for before considering use w/reciprocating compressors.

• **Standard design:**

- Weather hoods and clips
- Expanded metal screen covers outlet
- Elements are included and installed
- Galvanized metal construction with grey enamel finish
- Bolt holes at outlet flange to be half drilling, aligned to straddle centerlines as if fully drilled. (No flange connections)

• **329-9928 1st Stage Element**

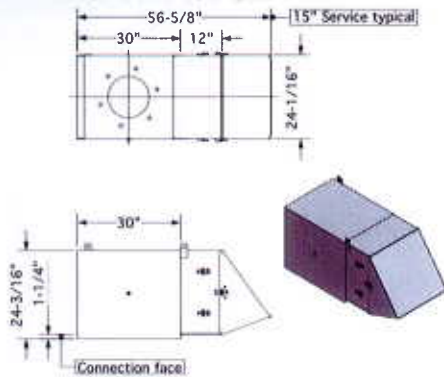
This filter panel incorporates pleated polyester filter media @ 15 µ retention. Panels can be cleaned by using indirect compressed air or mild detergent cleaning solution. Woven wire screen armors both faces of the synthetic filter media. A pull strap across the face of the panel ensures ease in maintenance. The frame is one piece electrogalvanized steel. Downstream expanded metal or woven wire face screen.

• **329-9927 2nd Stage**

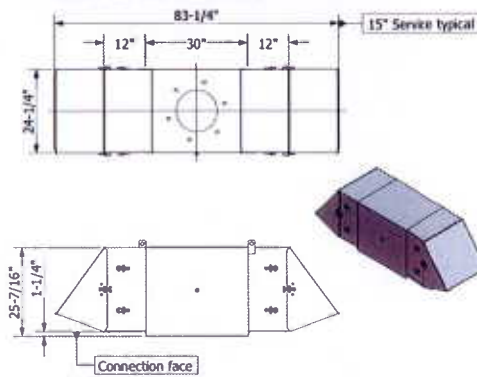
This filter panel incorporates pleated microglass filter media with gaskets on each face. It's filter media offers 99.97% efficiency @ 2µ retention with aluminum fin spacers and a galvanized frame construction.

Enameled Steel Housing Cat No.	304SS Housing Cat No.	Flow Capacity	# of Inlets	Std outlet size	Max. outlet size	Wgt Lbs.	1st Stage Elem. No.	2nd Stage Elem. No.
S20-0101-BC-080	S22-0101-BC-080	2,500	1	8"	16"	170	329-9928	329-9927
S20-0102-BC-120	S22-0102-BC-120	5,000	2	12"	16"	230	329-9928	329-9927
S20-0103-BC-160	S22-0103-BC-160	7,500	3	16"	24"	350	329-9928	329-9927
S20-0104-BC-200	S22-0104-BC-200	10,000	4	20"	24"	425	329-9928	329-9927
S20-0105-BC-240	S22-0105-BC-240	12,500	5	24"	24"	560	329-9928	329-9927
S20-0106-BC-240	S22-0106-BC-240	15,000	6	24"	24"	625	329-9928	329-9927
S20-0107-FF-280	S22-0107-FF-280	17,500	7	28"	30"	775	329-9928	329-9927
S20-0108-FF-280	S22-0108-FF-280	20,000	8	28"	30"	850	329-9928	329-9927

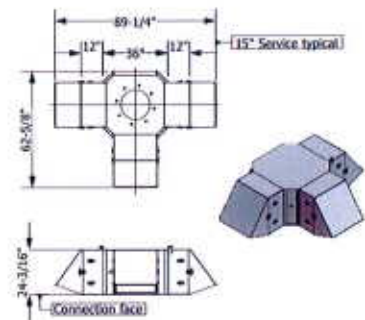
S20-0101-BC-080



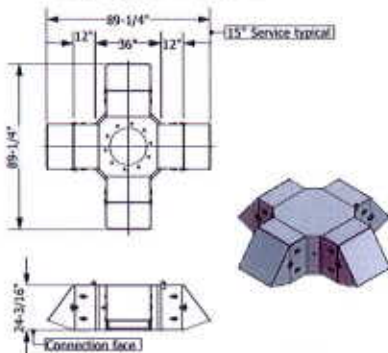
S20-0102-BC-120



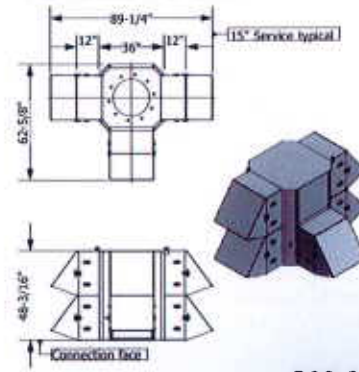
S20-0103-BC-160



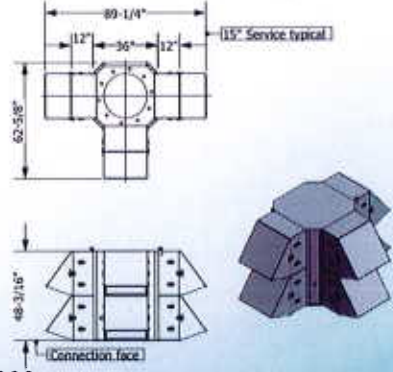
S20-0104-BC-200



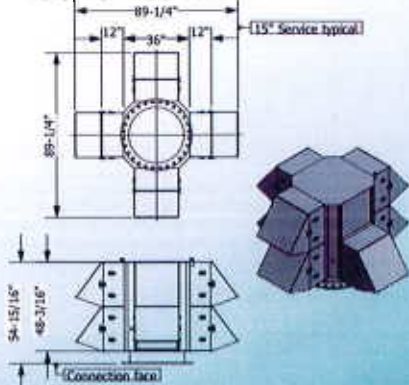
S20-0105-BC-240



S20-0106-BC-240



S20-0107-FF-280



S20-0108-FF-280

